

MICROSOFT BUSINESS SOLUTIONS-AXAPTA

Microsoft® Business Solutions–Axapta® Enterprise Portal makes it easy for you to connect with your business community over the Internet.

**Key Benefits:**

- Connects you with customers, vendors and other partners
- Provides you with a customized Web browser for business application information and functionality
- Increases your return on investment

Microsoft Axapta Enterprise Portal enables your customers, vendors, business partners and employees to directly access relevant business information and conduct business transactions with Microsoft Axapta through personalized, role-based Web portals via the Internet. With Enterprise Portal, you can increase the speed of doing business while driving down costs.

Microsoft Axapta is an all-in-one solution that gives you real time connectivity across your business. Enterprise Portal can exchange information with all functional areas in the solution such as Product Builder, Sales and Marketing, HRM and Financials, to help improve your overall business performance.

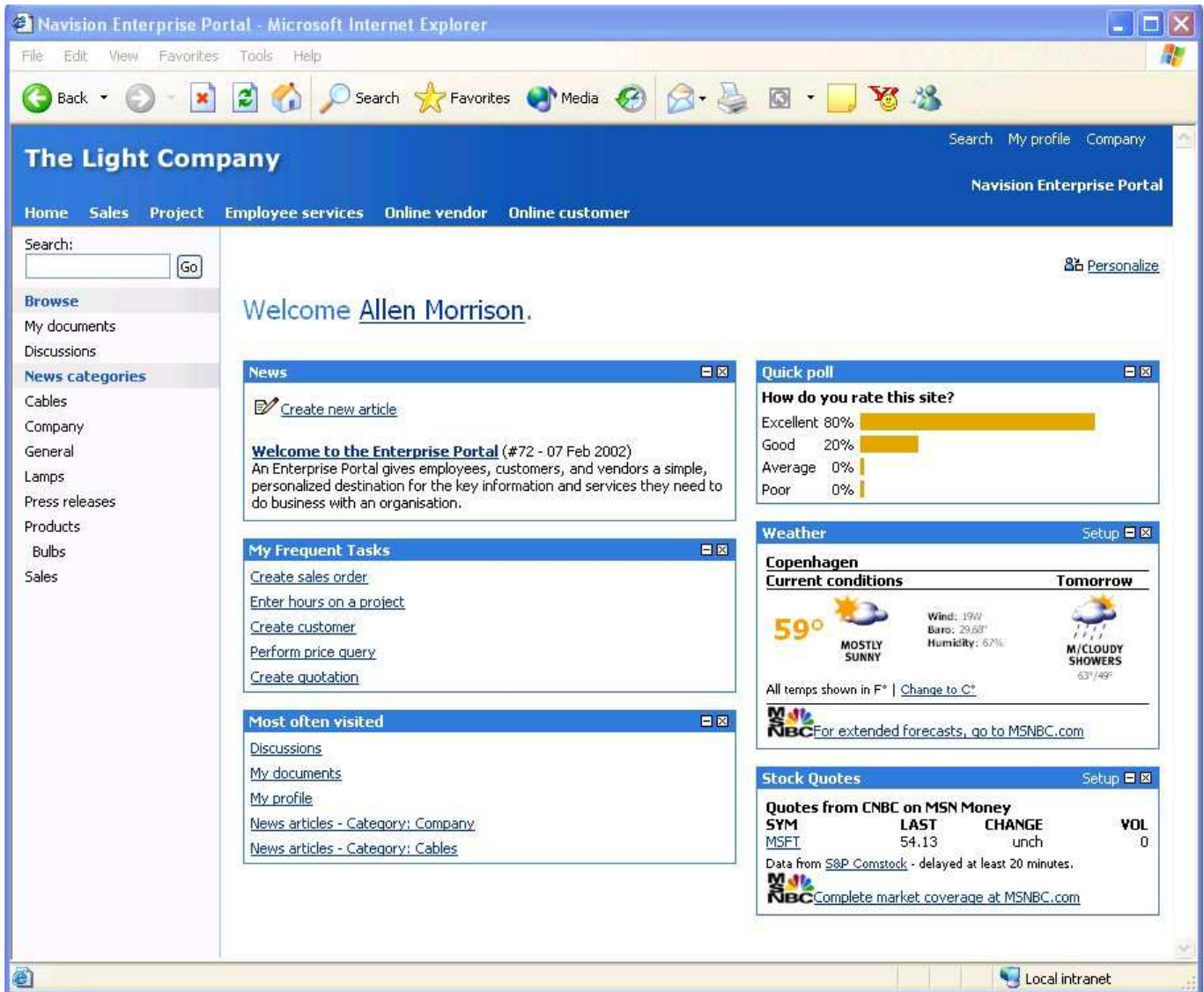
**Get cost-effective connectivity**

Streamline business processes and extend the reach of information within your organization and between business partners. Enterprise Portal helps reduce transaction costs and manual paperwork by using the Internet to connect employees and business partners. It offers anytime, anywhere access to back-office information and functionality to those in your business community.

Reducing IT maintenance and administration will help you lower your IT costs. Enterprise Portal delivers a familiar Microsoft-based user interface, which simplifies training, thus lowering training costs. Enterprise Portal deploys quickly and allows multiple locations to access data from a single database, which makes it easy and inexpensive to maintain across the organization. Changes made in the database are reflected instantly across the system, to both internal and external users.

**Tailor Web portals for each user**

Share, interact and collaborate using personalized, role-based Web sites. With Enterprise Portal, you can customize Web portals based on users' individual needs and job function. Predefined roles simplify set up and enable you to give employees and business



Example of an employee web portal

partners access to only that information that is relevant to their job function—no more no less. Individuals can further personalize their Web sites by adding or removing information fields or functionality to quickly and efficiently help them get the most out of the system.

**Allow customers to help themselves**

Use the Internet to deliver company and product information to your customers. Enterprise Portal allows access to your business regardless of time zones, languages and geographical barriers. Your business is always open and your customers can do business with you the way they want. Making use of Microsoft Axapta functionality such as the Product Builder feature, you can even allow customers to configure products online,

and they will immediately receive accurate information on price, item availability and delivery time.

With Enterprise Portal, you can also offer your customers the same service they would get from a large call center by setting up relevant FAQ Web pages and online customer service centers to handle common questions and demands. By putting routine business information on the Internet, you will save customer service resources while increasing your responsiveness.

**Empower your employees**

Offer anywhere, anytime business information access to your employees through a Web browser. With Enterprise Portal, your employees won't waste time looking for information, because the information they need to make accurate and quick business decisions is

delivered directly to their Web portals. Employees can use the advanced search functionality to track down business information not already presented on their desktops.

Your employees working on remote sites or on the road can use their Web portal to input hours and project data in order to keep your business information up-to-date, regardless of where they are. You can also connect other employees who don't need the complete Microsoft Axapta client access. External contacts who previously worked outside your ERP system (for example, with outdated paper reports) can use Enterprise Portal to connect and work directly with your business data.

#### Connect with partners

Open your business to partners and enable them to communicate with you at their convenience. Use Enterprise Portal to simplify and automate inefficient manual communication and transactions. Optimize your business relationships by communicating with your partners in their language, using their currency and following their national business regulations.

#### Increase return on investment

Increase return on investment for your entire solution by increasing efficiency and extending the reach of your current ERP system or certain legacy applications. Enterprise Portal allows you to provide quick and affordable information access to all employees and others in your business community. This ensures more efficient distribution of information resulting in more profitable business decisions. With Enterprise Portal, you can reach out to new customers easily and efficiently, and on their terms, which can give you competitive advantages. With Enterprise Portal, Microsoft Business Solutions is delivering on the promise of e-business.

#### About Microsoft Axapta

Microsoft Axapta is built around the premise that the Internet is a natural part of the development environment, and thereby your ERP system. That's why you can reach out to your business community quickly and without an expensive upgrade or extra tools. The extent you want to reach out is up to you. The three-tier architecture provides scalability and accommodates a large number of simultaneous users and transactions, as well as the ability to expand geographically. With Microsoft Axapta, you are also prepared for emerging

technologies, such as mobile solutions and PDAs, as their role in collaboration increases.

#### Part of a total solution

Microsoft Enterprise Portal is part of Microsoft Business Solutions–Axapta, a customizable, scalable and global Enterprise Resource Planning (ERP) solution that provides you with a fast and powerful way to gain a competitive advantage

#### For more information about Microsoft Axapta

To learn more about Microsoft Axapta, contact your local Microsoft Business Solutions office or Microsoft Certified Business Solution Partner, using the following Web address. They have the expertise to meet your specific business needs.

[www.microsoft.com/BusinessSolutions](http://www.microsoft.com/BusinessSolutions)

#### About Microsoft Business Solutions

Microsoft Business Solutions, a division of Microsoft, offers a wide range of integrated, end-to-end business applications and services designed to help small, midmarket and corporate businesses become more connected with customers, employees, partners and suppliers. Microsoft Business Solutions' applications optimize strategic business processes across financial management, analytics, human resources management, project management, customer relationship management, field service management, supply chain management, e-commerce, manufacturing and retail management. The applications are designed to provide insight to help customers achieve business success. More information about Microsoft Business Solutions can be found at [www.microsoft.com/BusinessSolutions](http://www.microsoft.com/BusinessSolutions).

#### Address:

Microsoft Business Solutions  
One Lone Tree Rd  
Fargo, ND 58104

[www.microsoft.com/BusinessSolutions](http://www.microsoft.com/BusinessSolutions)

Key Features	Description
<b>ENTERPRISE PORTAL PLATFORM</b>	<ul style="list-style-type: none"> <li>▪ Designed for security</li> <li>▪ Little or no training for users</li> <li>▪ Usable for Intranet, Extranet, Web portal and Online Communities</li> <li>▪ Integrated user assistance and guided tasks</li> <li>▪ Real-time data and business logic</li> <li>▪ Fully customizable and extendable with built-in tools</li> <li>▪ Rapid deployment using Web-site wizard</li> <li>▪ Multiple language and currency functionality</li> <li>▪ Automatic authentication of users on network</li> <li>▪ Data Crawler builds searchable Full Text Index, to allow back office data searches</li> <li>▪ Category browsing allows for easy drilling down of business data</li> <li>▪ Access Microsoft Exchange information without the need for plug-ins or ActiveX</li> <li>▪ Access activity centers</li> </ul>
<b>ADVANCED FUNCTIONALITY</b>	<ul style="list-style-type: none"> <li>▪ Access the advanced functionality of Microsoft Axapta (such as: Product Builder, ATP, CTP)</li> <li>▪ Access third-party data via XML)</li> <li>▪ Incorporate content from information sources, other back office and front office systems using Web Parts</li> </ul>
<b>ROLE AND PERMISSION MANAGEMENT</b>	<ul style="list-style-type: none"> <li>▪ Personalization</li> <li>▪ Flexible role setup</li> <li>▪ Customizable to the exact requirements of any organization</li> <li>▪ All activities leverage the existing Microsoft Axapta business logic</li> </ul>
<b>PRECONFIGURED ROLES AVAILABLE</b>	<ul style="list-style-type: none"> <li>▪ Sales Representative role</li> <li>▪ Employee role</li> <li>▪ Consultant role</li> <li>▪ Customer role</li> <li>▪ Vendor role</li> </ul>
<b>CONTENT MANAGEMENT</b>	<ul style="list-style-type: none"> <li>▪ Flexible definition of content management topics</li> <li>▪ Subscription feature</li> <li>▪ Online editing and publishing of articles</li> <li>▪ Online administration of topics</li> <li>▪ Proofreading and moderation support</li> <li>▪ Attach documents</li> <li>▪ Discussion forums</li> </ul>

#### Module Requirements

<p>TO OBTAIN ALL OF THE FEATURES MENTIONED IN THIS FACT SHEET, THE FOLLOWING MODULES AND TECHNOLOGIES ARE REQUIRED:</p>	<ul style="list-style-type: none"> <li>▪ Microsoft Business Solutions–Axapta 3.0 or later</li> <li>▪ Microsoft Business Solutions–Axapta Trade Series</li> <li>▪ Microsoft Business Solutions–Axapta Logistics Series</li> <li>▪ Microsoft Business Solutions–Axapta Trade Agreements</li> <li>▪ Microsoft Business Solutions–Axapta Enterprise Portal Framework</li> <li>▪ Microsoft Business Solutions–Axapta Enterprise Portal – Customer Role</li> <li>▪ Microsoft Business Solutions–Axapta Enterprise Portal – Employee Role</li> <li>▪ Microsoft Business Solutions–Axapta Enterprise Portal – Sales Representative Role</li> <li>▪ Microsoft Business Solutions–Axapta Enterprise Portal – Consultant Role</li> <li>▪ Microsoft Business Solutions–Axapta Enterprise Portal – Vendor Role</li> <li>▪ Employee Development for Enterprise Portal</li> <li>▪ Performance Management for Enterprise Portal</li> <li>▪ Questionnaire for Enterprise Portal</li> <li>▪ Product Builder for Enterprise Portal</li> <li>▪ Customer Relationship Management for Enterprise Portal</li> <li>▪ Microsoft Internet Information Server</li> </ul>
---	---

**System Requirements**

AREA	Requirement (at least one of the following within each area)
CLIENTS	<ul style="list-style-type: none"> <li>▪ Microsoft Windows® 98</li> <li>▪ Microsoft Windows NT 4.0</li> <li>▪ Microsoft Windows 2000</li> <li>▪ Microsoft Windows XP</li> </ul>
SERVER PLATFORMS	<ul style="list-style-type: none"> <li>▪ Microsoft Windows 2000 Server</li> <li>▪ Microsoft Windows 2000 Adv. Server</li> <li>▪ Microsoft Windows NT 4.0</li> <li>▪ Microsoft Windows Server 2003 Std.</li> <li>▪ Microsoft Windows Server 2003 Enterprise</li> </ul>
WEB SERVER	<ul style="list-style-type: none"> <li>▪ Microsoft Internet Information Server 5.x</li> <li>▪ Microsoft Internet Information Server 6.0 (from Microsoft Axapta 3.0 SP2)</li> </ul>
DATABASES	<ul style="list-style-type: none"> <li>▪ Microsoft SQL Server™000</li> <li>▪ Oracle 9i</li> </ul>
BROWSER	<ul style="list-style-type: none"> <li>▪ Microsoft Internet Explorer 4.01</li> <li>▪ Microsoft Internet Explorer 5.5</li> <li>▪ Microsoft Internet Explorer 6.0</li> </ul>
MS OFFICE (ONLY IF NEEDED)	<ul style="list-style-type: none"> <li>▪ Microsoft Office 2000</li> <li>▪ Microsoft Office XP</li> </ul>

08.01.2003

The information contained in this document represents the current view of Microsoft Corporation on the issues discussed as of the date of publication. Because Microsoft must respond to changing market conditions, it should not be interpreted to be a commitment on the part of Microsoft, and Microsoft cannot guarantee the accuracy of any information presented after the date of publication.

This document is for informational purposes only. MICROSOFT MAKES NO WARRANTIES, EXPRESS, IMPLIED OR STATUTORY, AS TO THE INFORMATION IN THIS DOCUMENT.

Complying with all applicable copyright laws is the responsibility of the user. Without limiting the rights under copyright, no part of this document may be reproduced, stored in or introduced into a retrieval system, or transmitted in any form or by any means (electronic, mechanical, photocopying, recording, or otherwise), or for any purpose, without the express written permission of Microsoft Corporation.

Microsoft may have patents, patent applications, trademarks, copyrights, or other intellectual property rights covering subject matter in this document. Except as expressly provided in any written license agreement from Microsoft, the furnishing of this document does not give you any license to these patents, trademarks, copyrights, or other intellectual property.

© 2003 Microsoft Business Solutions ApS, Denmark. All rights reserved. Microsoft, Windows, SQL Server, Great Plains, Navision, FRx, and Axapta are either registered trademarks or trademarks of Microsoft Corporation, Great Plains Software, Inc., FRx Software Corporation, or Microsoft Business Solutions ApS or their affiliates in the United States and/or other countries. Great Plains Software, Inc., FRx Software Corporation, and Microsoft Business Solutions ApS are subsidiaries of Microsoft Corporation. The names of actual companies and products mentioned herein may be the trademarks of their respective owners. The example companies, organizations, products, domain names, email addresses, logos, people and events depicted herein are fictitious. No association with any real company, organization, product, domain name, e-mail address, logo, person, or event is intended or should be inferred.