

Microsoft® Business Solutions–Axapta® Master Planning streamlines your manufacturing processes and supply chain to help you reduce costs and satisfy customer demands.

Key Benefits:

- Minimize lead times and maximize on-time deliveries to customers
- Respond quickly to changes in demand for materials and capacity
- Reduce inventory levels through improved production planning and forecast scheduling

Microsoft Business Solutions–Axapta Master Planning is a flexible solution that helps you optimize the flow of product from suppliers, through production to your customers.

Microsoft Axapta is an all-in-one solution that gives you real-time connectivity across your business. Master Planning exchanges information with many other functional areas in the solution including Production, Logistics, Trade and CRM to improve your overall business performance.

Optimize production flow

Microsoft Axapta Master Planning uses information from across your company and supply chain to help you optimize production and materials planning, and scheduling. Finite materials and capacity scheduling can be performed at the same time so that available capacity, inventory levels and purchase lead times are taken into consideration in production planning. The result is more reliable planning of purchase, production and transfer orders, which optimizes your production flow and helps ensure on-time delivery to customers.

Flexible planning results in increased efficiency

Use different master planning versions to run online simulations and what-if calculations, so you can foresee the impact of different sales forecasts and planning strategies. Master scheduling can be run in a fast, net change mode where only the latest changes are included in the calculations. This allows you to run materials and production planning as often you need to so you can always have an up-to-date picture of net requirements.

Outsource production with ease

Outsource production to sub-contractors as the need arises in order to help free up capacity and keep your delivery promises to customers. You can model sub-contractor capacity levels in the system and quickly implement make or buy strategies at all times in the planning process.

Quickly respond to changes

Action messages suggest changes to purchase and production orders based on changing requirements, helping you to optimize inventory levels and improve production flow. Additionally, future messages provide notification of the earliest possible delivery date so that you can quickly take action on sales orders to maintain customer satisfaction. Increase the efficiency and accuracy of planning with time fences that help ensure that procedures are carried out at the right time according to your manufacturing policies.

Deliver on time

Keep your delivery promises with order promising functionality that uses information from sales, warehouse, purchasing and production to give you an accurate overview of stock availability, delivery time and price. Avoid making delivery promises you can't keep by running available-to-promise (ATP) calculations based on available inventory and current production orders, as well as capable-to-promise (CTP) calculations based on raw material lead-times and production

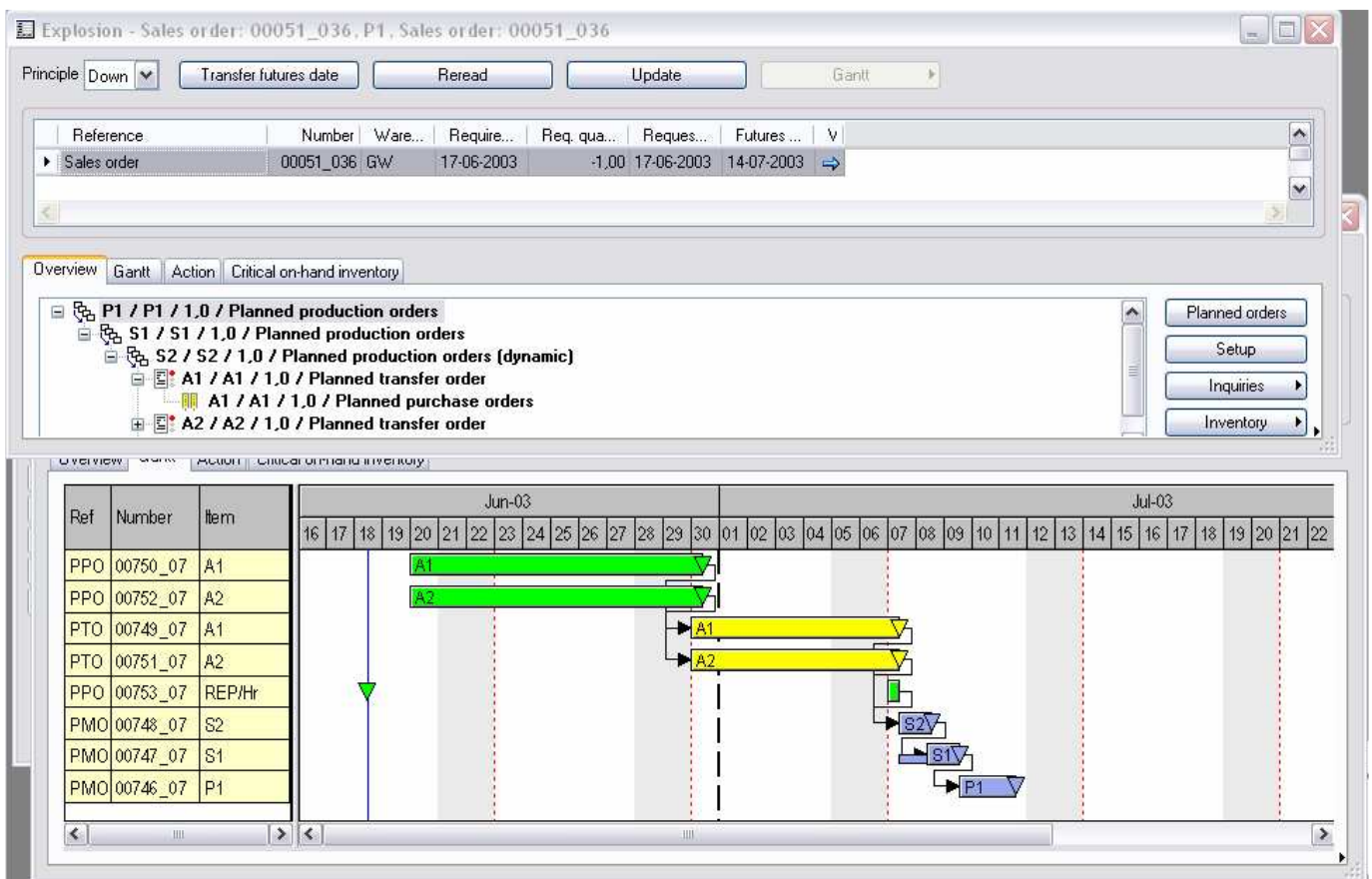
capacity.

Fast planning for increased customer satisfaction

Use one master planning run to cover your entire business. With Microsoft Axapta Master Planning you can speed up planning and enable employees to act on changes quickly, because all employees from production management to the shop floor have visibility into master planning changes.

Minimize inventory levels to reduce costs

Cut down on unnecessary inventory carrying costs while still meeting your customers' delivery demands. Forecast scheduling in Microsoft Axapta Master Planning uses sales forecasts to project production and purchasing plans that are closely matched with demand. You can also optimize safety stock levels based on target service levels or on lead time coverage. Include seasonal deviation in product sales when calculating safety stock to further refine inventory levels.



Use sales order explosion functionality to perform master scheduling on a single sales order which helps you plan faster and quickly promise your customers a reliable delivery date.

Function seamlessly across warehouses

Further optimize your production planning by sourcing materials from across multiple warehouses. Microsoft Axapta Master Planning can operate with any number of warehouses and automatically generates transfer orders to fulfill inventory requirements. In addition, you can set up each warehouse with individual parameters to help ensure correct levels of safety stock and service at different locations.

Search and find the right vendor for you

Reduce costs and lead times by finding the vendor that offers either the lowest price or the shortest lead time for a particular item. You can manually search for vendors depending on your priorities or Microsoft Axapta Master Planning can automatically select the best vendor based on your predefined requirements.

Part of a total solution

Microsoft Axapta Master Planning is part of Microsoft Business Solutions-Axapta, a customizable, scalable and global Enterprise Resource Planning (ERP) solution that supports connectivity with your business community and provides you with a fast and powerful way to gain competitive advantage.

For more information about Microsoft Axapta

To learn more about Microsoft Axapta, contact your local Microsoft Business Solutions office or Microsoft Certified Business Solutions Partner, using the following Web address. They have the expertise to meet your specific business needs.

www.microsoft.com/BusinessSolutions

About Microsoft Business Solutions

Microsoft Business Solutions, a division of Microsoft, offers a wide range of integrated, end-to-end business applications and services designed to help small, midmarket and corporate businesses become more connected with customers, employees, partners and suppliers. Microsoft Business Solutions' applications optimize strategic business processes across financial management, analytics, human resources management, project management, customer relationship management, field service management, supply chain management, e-commerce, manufacturing and retail management. The applications are designed to provide insight to help customers achieve business success. More information

about Microsoft Business Solutions can be found at www.microsoft.com/BusinessSolutions.

Address:

Microsoft Business Solutions

One Lone Tree Rd

Fargo, ND 58104

www.microsoft.com/BusinessSolutions

Key Features	Description
MULTIPLE FORECAST AND MASTER PLANS	Support of multiple plans for forecast and master scheduling Use multiple plans to simulate material and capacity requirements based on different conditions
FORECAST SCHEDULING	Based on sales and purchase forecasts Gives you an overview of long-term purchase, production and resource requirements
MASTER SCHEDULING	Provides you with an overview of short-term purchase, production and resource requirements based on existing orders and/or forecast scheduling The result is planned production, purchase and transfer orders and net requirements.
TIME FENCES	Located on forecast plans and master plans. Options for time fence control include: <ul style="list-style-type: none"> • Coverage – how long into the future should we look • Explosion – how long into the future must we break down BOMs • Capacity – how long into the future must we take capacity into consideration • Freezing – how many days into the future should the existing plan be locked • Firming – period for automatic creation of purchase orders and production orders
COVERAGE GROUPS	A coverage group enables different time fence controls to be attached to different items. The coverage group contains all item planning parameters
COVERAGE CODE	Coverage codes are inventory replenishment rules. Options for different coverage codes include: Manual, Min/max, Period, Lot for lot.
SCHEDULING METHODS	Two different levels of scheduling: operations scheduling and job scheduling. Scheduling options include: <ul style="list-style-type: none"> • Finite or infinite capacity and materials scheduling • Backwards or forwards scheduling • Detailed scheduling by day, hours and minutes
PLANNED ORDERS	Planned purchase, production and transfer orders are the result of master planning. They can be modified, deleted or accepted
FUTURE MESSAGES	Future messages flag orders that cannot be delivered on the requested date. The future message is the earliest possible delivery date based on materials and capacity requirements.
ACTION MESSAGES	Action messages are used to reduce inventory. They suggest changes to existing orders and planned orders to: <ul style="list-style-type: none"> • Increase or decrease quantity • Postpone or advance the order • Or a combination of the above
NET REQUIREMENTS	Gives you visibility over the entire master scheduling process. View by day, week or month
ORDER PROMISING	Sales order explosion gives you the ability to break down a BOM item, and calculate an earliest possible delivery date based on route and incoming items Available-to-promise (ATP): calculates delivery date based on available inventory and current production orders. Capable-to-promise (CTP): calculates delivery date based on available materials and production capacity.

System Requirements

TO OBTAIN ALL OF THE FEATURES MENTIONED IN THIS FACT SHEET, THE FOLLOWING MODULES ARE REQUIRED:	Microsoft Business Solutions–Axapta 3.0 Microsoft Business Solutions–Axapta Trade Microsoft Business Solutions–Axapta Trade Agreements Microsoft Business Solutions–Axapta Logistics Microsoft Business Solutions–Axapta Production III
--	---

08.01.2003

The information contained in this document represents the current view of Microsoft Corporation on the issues discussed as of the date of publication. Because Microsoft must respond to changing market conditions, it should not be interpreted to be a commitment on the part of Microsoft, and Microsoft cannot guarantee the accuracy of any information presented after the date of publication.

This document is for informational purposes only. MICROSOFT MAKES NO WARRANTIES, EXPRESS, IMPLIED OR STATUTORY, AS TO THE INFORMATION IN THIS DOCUMENT.

Complying with all applicable copyright laws is the responsibility of the user. Without limiting the rights under copyright, no part of this document may be reproduced, stored in or introduced into a retrieval system, or transmitted in any form or by any means (electronic, mechanical, photocopying, recording, or otherwise), or for any purpose, without the express written permission of Microsoft Corporation.

Microsoft may have patents, patent applications, trademarks, copyrights, or other intellectual property rights covering subject matter in this document. Except as expressly provided in any written license agreement from Microsoft, the furnishing of this document does not give you any license to these patents, trademarks, copyrights, or other intellectual property.

© 2003 Microsoft Business Solutions ApS, Denmark. All rights reserved. Microsoft, Great Plains, Navision, FRx, and Axapta are either registered trademarks or trademarks of Microsoft Corporation, Great Plains Software, Inc., FRx Software Corporation, or Microsoft Business Solutions ApS or their affiliates in the United States and/or other countries. Great Plains Software, Inc., FRx Software Corporation, and Microsoft Business Solutions ApS are subsidiaries of Microsoft Corporation. The names of actual companies and products mentioned herein may be the trademarks of their respective owners. The example companies, organizations, products, domain names, email addresses, logos, people and events depicted herein are fictitious. No association with any real company, organization, product, domain name, e-mail address, logo, person, or event is intended or should be inferred.