

Microsoft® Business Solutions–Axapta® **Warehouse Management gives you the flexibility and control you need to optimize your warehouse processes according to your individual needs.**

**Key Benefits:**

- Optimize your warehouse layout to increase efficiency
- Obtain a complete overview of inventory to help improve customer service
- Streamline your warehouse processes to reduce costs

Microsoft Business Solutions–Axapta Warehouse Management provides the insight into your inventory and the warehouse management tools to help you increase customer satisfaction and reduce costs. Warehouse Management comprises two modules: Standard and Advanced Warehouse Management.

Microsoft Axapta is an all-in-one solution that gives you real-time connectivity across your business. Warehouse Management exchanges information with many other functional areas in the solution including Logistics, Production and Trade, to help improve your overall business performance.

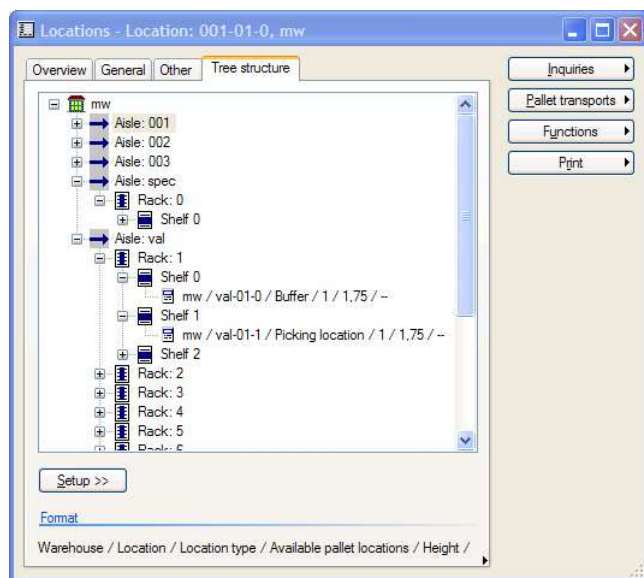
**Optimize your warehouse layout**

Warehouse Management gives you the flexibility to define your warehouse layout according to your changing needs, so you can achieve optimum warehouse efficiency. Establish high- and low-priority storage areas for optimum placement of goods and block locations to restrict movement of goods. Divide your warehouse into zones to accommodate different storage needs such as temperature requirements or the rate of turnover of various items. You can specify warehouse locations on five levels: warehouse, aisle, rack, shelf and bin. And define each location based on parameters such as space and pallet type. In addition, you can either control how items are stored based on predefined location rules, or have the flexibility to randomly manage item storage.

**Increase your warehouse efficiency**

Warehouse Management helps you to use warehouse space efficiently by automatically identifying optimal storage locations for items, based on the characteristics of items and warehouse zones. All warehouse activities are recorded in journals, so you can recreate a complete history of actions and item identifiers using an audit trail. Bar coding can be used to increase the speed and accuracy of picking and putting away of items.

Warehouse Management helps to determine the most logical sequence of picking locations in order to optimize your picking routes and speed up order fulfillment to your customers. Picking routes are allocated by the system based on parameters such as zones, and height of locations. Several orders can be included in one route to enable better use of pallet loads and further increase warehouse efficiency. You can achieve faster picking and packing with good visibility into possible pick locations from the shipment. And you can improve overall efficiency with internal transfers such as shipments which include bills of materials—to move items straight from the warehouse into production.



Flexibly manage storage of items according to different location parameters including location types, space and pallet heights.

#### Increase customer satisfaction

Register goods as they arrive at the warehouse, so that they are visible throughout the system before they have been placed in inventory. You can reserve items for customers, including items from a specific location or batch, while entering a sales order. This reservation is recognized by all functions in Microsoft Axapta, such as inventory counts, planning of production and others, to help ensure that customer demands are satisfied.

#### Get a complete overview of your inventory

In order to track items internally and throughout the supply chain, you can automatically have inventory stamped with a number linked to shipments and deliveries. For improved traceability, Warehouse Management lets you create as many serial or batch

numbers for the automatic numbering of items as you require.

Determine the exact location of a specific item in your warehouse with inventory dimensions, which can include information regarding warehouse batch number, location, pallet ID and serial number. Inventory dimensions are also a powerful tool to track serial and batch numbers and can be used to get a clear overview of items in your warehouse.

#### Part of a total solution

Warehouse Management is part of Microsoft Business Solutions–Axapta, a customizable, scalable and global Enterprise Resource Planning (ERP) solution that supports connectivity with your business community and provides you with a fast and powerful way to gain a competitive advantage.

#### For more information about Microsoft Axapta

To learn more about Microsoft Axapta, contact your local Microsoft Business Solutions office or Microsoft Certified Business Solutions Partner, using the following Web address. They have the expertise to meet your specific business needs.

[www.microsoft.com/BusinessSolutions](http://www.microsoft.com/BusinessSolutions)

#### About Microsoft Business Solutions

Microsoft Business Solutions, a division of Microsoft, offers a wide range of integrated, end-to-end business applications and services designed to help small, midmarket and corporate businesses connect better with their customers, employees, partners and suppliers. Microsoft Business Solutions applications optimize strategic business processes across financial management, analytics, human resources management, project management, customer relationship management, field service management, supply chain management, e-commerce, manufacturing and retail management. These applications are designed to help businesses succeed and achieve their goals. More information about Microsoft Business Solutions can be found at [www.microsoft.com/BusinessSolutions](http://www.microsoft.com/BusinessSolutions).

#### Address:

Microsoft Business Solutions  
One Lone Tree Rd  
Fargo, ND 58104

[www.microsoft.com/BusinessSolutions](http://www.microsoft.com/BusinessSolutions)

Key Features	Description
PLACEMENT AND STORAGE	<ul style="list-style-type: none"> <li>Specify different location and storage policies at both the warehouse level and the item level</li> </ul>
INVENTORY DIMENSIONS	<p>Eight different dimensions to specify exact location of items in inventory</p> <p>Identification of:</p> <ul style="list-style-type: none"> <li>physical location: warehouse and location*</li> <li>physical location: warehouse, location and pallets</li> <li>item origin: serial number and batch number</li> <li>characteristics: configuration, color and size</li> </ul>
SERIAL AND BATCH NUMBER CONTROL	<ul style="list-style-type: none"> <li>Stamp a single item or a group of items with a unique number for tracking</li> </ul>
RANDOM-LOCATION STORAGE	<ul style="list-style-type: none"> <li>Determine the storage location based on rules regarding size, volume and height</li> <li>Allocate storage based on priority of picking locations first and then buffer locations</li> </ul>
ARRIVAL JOURNALS	<ul style="list-style-type: none"> <li>Use for item registration</li> <li>Make items available on-hand in inventory immediately after posting of arrival journal</li> <li>Have the option of either manual or automatic suggestion of arrival and output locations according to storage and item setup</li> </ul>
WAREHOUSE ZONES	<ul style="list-style-type: none"> <li>Organize warehouses into storage zones in order to prioritize selection of locations for incoming inventory</li> </ul>
WAREHOUSE LOCATIONS	<ul style="list-style-type: none"> <li>Specify warehouse locations on five levels: warehouse, aisle, rack, shelf and bin</li> </ul>
SHIPMENTS	<ul style="list-style-type: none"> <li>Drill down output orders to possible pick locations through the shipment journal</li> <li>Specify that shipments are sales order specific or customer specific</li> <li>Include shipments for multiple orders per customer</li> </ul>
OUTPUT ORDERS	<ul style="list-style-type: none"> <li>Derive output orders from sales order lines or production order lines</li> <li>Generate output orders as requisitions to warehouse</li> <li>Define shipments so that they result in the creation of optimized picking routes</li> </ul>
PALLET TRANSPORTS	<ul style="list-style-type: none"> <li>Create pallet transports from the following order types: input, output or refill orders</li> <li>Allocate prioritization to order types</li> </ul>
PALLET TYPES	<ul style="list-style-type: none"> <li>Consider different pallet types corresponding to different sizes when selecting locations</li> </ul>
BAR-CODING	<ul style="list-style-type: none"> <li>Read and write the following five different types of bar codes: EAN128/UCC128, Code 39, Interleaved 2 of 5, Code 128.</li> <li>Print pallet label, location label and bill of lading labels containing bar codes</li> </ul>
QUARANTINE MANAGEMENT	<ul style="list-style-type: none"> <li>Specify quarantine requirements at the item level</li> <li>Automatically send and lock quarantine items pending inspection to the quarantine warehouse</li> </ul>

\*This functionality is included in the Standard Warehouse Management module. All other functionality listed on this data sheet is included in the Advanced Warehouse Management module.

### System Requirements

<p>TO OBTAIN ALL OF THE FEATURES MENTIONED IN THIS FACT SHEET, THE FOLLOWING MODULES AND TECHNOLOGIES ARE REQUIRED:</p>	<p>Microsoft Business Solutions–Axapta 3.0            Microsoft Business Solutions–Axapta Trade            Microsoft Business Solutions–Axapta Logistics            Microsoft Business Solutions–Axapta Warehouse Management I (Standard module)            Microsoft Business Solutions–Axapta Warehouse Management II (Advanced module)</p>
---	---

08.01.2003

The information contained in this document represents the current view of Microsoft Corporation on the issues discussed as of the date of publication. Because Microsoft must respond to changing market conditions, it should not be interpreted to be a commitment on the part of Microsoft, and Microsoft cannot guarantee the accuracy of any information presented after the date of publication.

This document is for informational purposes only. MICROSOFT MAKES NO WARRANTIES, EXPRESS, IMPLIED OR STATUTORY, AS TO THE INFORMATION IN THIS DOCUMENT.

Complying with all applicable copyright laws is the responsibility of the user. Without limiting the rights under copyright, no part of this document may be reproduced, stored in or introduced into a retrieval system, or transmitted in any form or by any means (electronic, mechanical, photocopying, recording, or otherwise), or for any purpose, without the express written permission of Microsoft Corporation.

Microsoft may have patents, patent applications, trademarks, copyrights, or other intellectual property rights covering subject matter in this document. Except as expressly provided in any written license agreement from Microsoft, the furnishing of this document does not give you any license to these patents, trademarks, copyrights, or other intellectual property.

© 2003 Microsoft Business Solutions ApS, Denmark. All rights reserved. Microsoft, Great Plains, Navision, FRx, and Axapta are either registered trademarks or trademarks of Microsoft Corporation, Great Plains Software, Inc., FRx Software Corporation, or Microsoft Business Solutions ApS or their affiliates in the United States and/or other countries. Great Plains Software, Inc., FRx Software Corporation, and Microsoft Business Solutions ApS are subsidiaries of Microsoft Corporation. The names of actual companies and products mentioned herein may be the trademarks of their respective owners. The example companies, organizations, products, domain names, email addresses, logos, people and events depicted herein are fictitious. No association with any real company, organization, product, domain name, e-mail address, logo, person, or event is intended or should be inferred.