

Microsoft® Navision Attain®

Benefits:

Microsoft Navision Attain for manufacturing gives you the adaptability you need to take advantage of new revenue opportunities.

It allows you to:

- Improve business performance from shop floor to bottom line
- Provide more responsive customer service
- Take advantage of new revenue opportunities

Manufacturing

Today's businesses need to adapt to change fast to stay competitive. Microsoft Navision Attain for manufacturing helps you respond to your customers' needs quickly and efficiently.

No.	Action Message	Accept Action Message	Due Date	Starting Date-Time	Ending Date-Time	Description	Original Quantity	Quantity	Ref. Order Type	Ref. Order No.	Ref. Order Status
1000	New	✓	04/03/02	02/22/02 8:00:00 AM	04/02/02 10:45:00 AM	Bicycle		268	Prod. Order	101001	Planned
1000	New	✓	04/03/02	02/07/02 10:37:00 AM	04/02/02 4:00:00 PM	Bicycle		300	Prod. Order	101002	Planned
1000	New	✓	04/03/02	03/19/02 12:51:00 PM	04/02/02 4:00:00 PM	Bicycle		100	Prod. Order	101003	Planned
1000	New	✓	04/04/02	03/15/02 9:12:00 AM	04/03/02 4:00:00 PM	Bicycle		100	Prod. Order	101004	Planned
1000	Cancel	✓	03/27/02	03/26/02 9:03:00 AM	03/26/02 4:00:00 PM	Bicycle	16	0	Prod. Order	1011003	Released
1000	Cancel	✓	03/29/02	03/28/02 1:45:00 PM	03/28/02 4:00:00 PM	Bicycle	10	0	Prod. Order	1011004	Released
1000	Resched. & Chg. Qty.	✓	03/29/02	02/07/02 1:58:00 PM	03/28/02 4:00:00 PM	Bicycle	16	150	Prod. Order	1010005	Firm Planned
1000	New	✓	04/04/02	02/04/02 12:51:00 PM	04/03/02 4:00:00 PM	Bicycle		100	Prod. Order	101005	Planned
1000	New	✓	04/04/02	01/30/02 9:12:00 AM	04/03/02 4:00:00 PM	Bicycle		100	Prod. Order	101006	Planned
1001	Reschedule	✓	04/03/02	04/02/02 11:14:00 AM	04/02/02 4:00:00 PM	Touring Bicycle		3	Prod. Order	1010006	Firm Planned

The Planning Worksheet feature in Attain allows users to determine which MRP-generated action messages to carry out.

Attain allows you to instantly change manufacturing methods and processes, helping you to keep up with changing customer needs. Modify components and operations on-the-fly, even on released production orders. Implement realistic plans according to your capacity demands, and redefine order modifiers, re-order policies, capacity, calendars, and manufacturing policy options.

Being able to respond quickly to customers gives you a competitive advantage. When customers know that you can answer any question about an order at any given time, they will continue to do business with you. Attain provides visibility into all aspects of your manufacturing processes and makes it easy to respond to emergencies immediately because they are easy to spot, track, and act upon.

The shop floor visibility provided by Attain helps you quickly identify processes that can be changed to operate more efficiently and profitably. It also helps you design new processes easily. Attain helps you improve business performance from the shop floor to the bottom line.

Contact your Navision Solution Center to learn more about Microsoft Navision Attain. The experts there will show you how you can improve your business processes with this remarkable software system.

"With the old system it was nearly impossible to keep up with all the changes. But with Navision we are on top of it, with great visibility into all our processes. Since we got Navision we've been able to increase productivity by 15-20% and cut lead times by around 2.5-5%."

Joachim Baum, IT Manager
Herzog GmbH, a just-in-time German manufacturer of precision machine parts



Microsoft®

Navision became part of Microsoft Business Solutions as of July 11, 2002.

NAVISION®

The Way to Grow

Manufacturing Product Overview

Basic Manufacturing:

- Order processing for sales, purchase, production, service and transfer orders
- Production of Bills Of Material (BOM), including phantom BOMs
- Version management of BOMs and routings
- Production orders including simulated, planned, firm planned, released and finished orders
- Production orders planned from sales orders as standard, project, or multiline production orders
- Reservation system for hard and soft allocation
- Blanket orders for long-term contracts
- Serial and lot number processing
- Flexible costing system for standard, average, FIFO, LIFO and specific costing
- Multi-dimensional tracking and pegging
- Forward, backward and manual flushing
- Consumption and output journals
- Production reports
- Cost tracking and handling of landed costs

Capacity Planning:

- Finite loading
- Work and machine centers
- Shop calendars and work shifts
- Routings
- Parallel scheduling
- 'Send ahead' functionality for just-in-time (JIT) production
- Routing link codes for automatic flushing
- Scrap and stop codes
- Automatic flushing of the work center or machine center provides automatic recording of expected output
- Subcontracting by work center or operation

Supply Planning:

- Order promising, including both available-to-promise (ATP) and capable-to-promise (CTP)
- Multilocation planning for efficient information and material flow through the supply chain
- Forecast and Master Production Schedule (MPS)
- Intelligent MRP scheduling including regenerative, net change and action message planning
- Interactive action messages
- Simultaneous planning of materials, capacities and costs

Supply Planning (continued):

- Item availability windows to instantly view the results of MRP
- Multiple worksheets for the review of various production options
- Make or buy decisions implemented on-the-fly
- Variants in planning

Additional Features:

- Multiple units of measure
- Item variants
- Handling of foreign items in inventory
- Inventory administration
- Item availability
- Calendars for customers, vendors and warehouses

Operating System Requirements:

Microsoft Navision Attain supports graphical 32-bit technology and a genuine client server, multitasking environment.

Client:

- Microsoft® Windows® XP
- Microsoft® Windows® 2000
- Microsoft® Windows NT® (Intel) version 4.0, SP6a
- Microsoft® Windows® 98, Second Edition
- Microsoft® Exchange Server version 5.5 SP4 for E-mail Logging for Microsoft Exchange

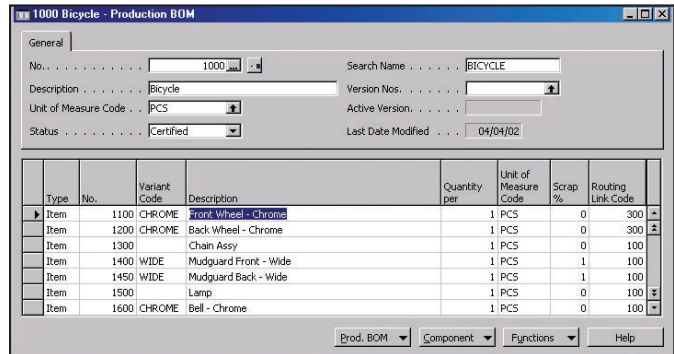
Server:

Microsoft Navision Attain Database Server:

- Microsoft® Windows® XP NT® (Intel) version 4.0 SP6a
- IBM AIX version 4.3.3 on IBM pSeries machines (RS/6000)

Microsoft SQL Server:

- Microsoft® SQL Server™ 2000, Service Pack 1 or later



Production Bills of Materials allows Attain users to configure multiple versions of final-assembly products.

Microsoft Business Solutions

Navision US
3505 Koger Boulevard, Suite 400
Duluth, GA 30096
Toll Free: 800-552-8478 Main Office: 678-226-8300 Web: www.navision-us.com

Microsoft

NAVISION
The Way to Grow

Navision became part of Microsoft Business Solutions as of July 11, 2002.

Copyright © 2002 Navision a/s, CBR No. 76 24 72 18. The trademarks referenced herein and marked with either TM or ® belong to Navision a/s. Microsoft, Great Plains and bCentral are either registered trademarks or trademarks of Microsoft Corporation or Great Plains Software, Inc. in the United States and/or other countries. Great Plains Software, Inc. is a wholly-owned subsidiary of Microsoft Corporation. Navision a/s is a subsidiary of Microsoft Corporation. The names of actual companies and products mentioned herein may be the trademarks of their respective owners. No part of this document may be reproduced or transmitted in any form or by any means, whole or in part, without the prior written permission of Navision a/s. Information in this document is based on Microsoft Navision Axapta version 3.0 and subject to change without notice. All rights reserved.